

Rab17

Catalog Number: 21049

Gene Symbol: RAB17

Description: Anti-Rab17 Rabbit Polyclonal Antibody

Background: The Rab-subfamily of small GTPases plays an important role in the regulation of membrane trafficking. Rab17 is an epithelial cell-specific GTPase, which is involved in transcellular transport.

Immunogen: A synthetic peptide from the C-terminal end of human Rab17 protein

Tested Applications: ELISA, WB, IHC

Recommended Dilutions:

ELISA 1:100-1:5000

WB 1:100-1:1000

IHC 1:100-1:1000

Concentration: 0.5 mg/ml

Host: Rabbit

Clonality: Polyclonal

Purity: Purified from serum

Format: Liquid

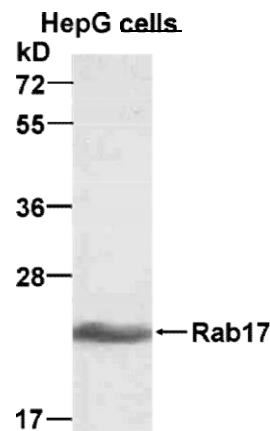
Preservative: No

Constituents: PBS (without Mg²⁺ and Ca²⁺), pH7.4, 150 mM NaCl and 50% glycerol

Species Reactivity: Rab17 antibody recognizes Rab17 from vertebrates.

Storage Conditions: Store at -20°C. Avoid freeze / thaw cycles

Western blot:



WB: anti-Rab17 pAb

HepG whole-cell lysate was used for Western blot with anti-Rab17 polyclonal antibody (Cat. # 21049).

FOR RESEARCH USE ONLY. NOT FOR DIAGNOSTIC APPLICATIONS